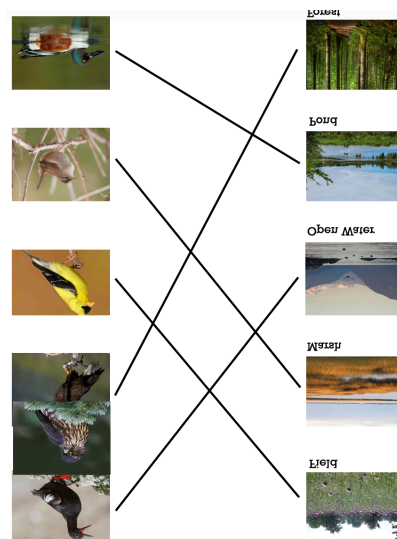




Get ready to spread your wings and dive into the fun with **Habitat Hunt!** This colorful matching game lets you connect our feathered friends with their cozy habitats! As you play, you'll not only match birds to their homes but also discover fun facts about where they live.

Here's how it works: Each bird has a unique habitat that you'll match up with their perfect spot in nature. With vibrant images of birds and their homes, *Habitat Hunt* is a fun and educational game for bird lovers and nature enthusiasts of all ages. So, take flight and explore the wild world of birds in this delightful adventure!

Answer key





Field



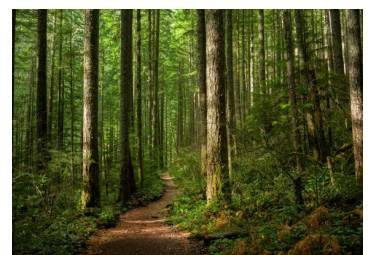
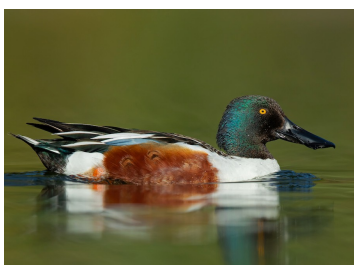
Marsh



Open Water



Pond



Forest



Pigeon guillemots can scale vertical rock faces by flapping its wings and using its sharp claws.



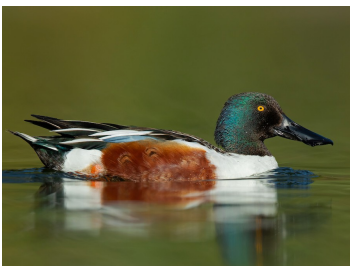
In courtship, merlin males perform spectacular flight displays, with steep dives, strong twisting flight, glides, rolling from side to side, and fluttering with shallow wingbeats.



Goldfinches are very dependent on thistles for food and even use thistledown to line their nests.



The nests of marsh wrens have a side entrance with a small ledge that is made to prevent the eggs from falling out.



Northern Shoveler's breed in wide areas across Eurasia, western North America and the Great Lakes region of the United States.